

UPS POWER

192V/Series



Lithium battery characteristics

Modular design, standardized production, simple and efficient; triple protection design, safe and reliable.

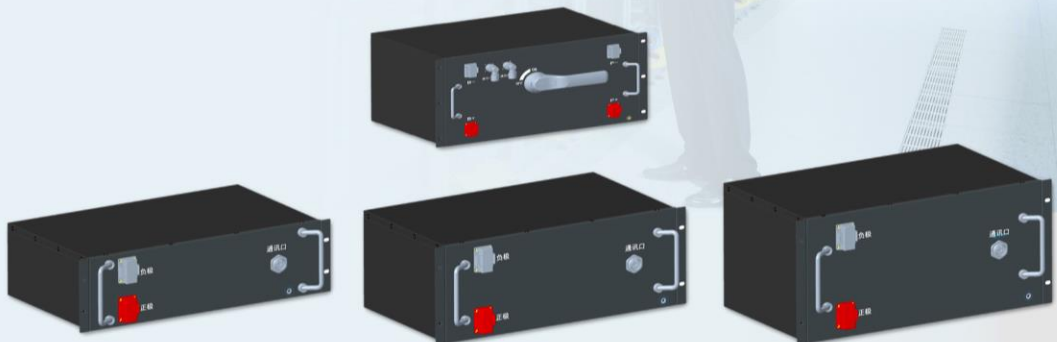
The BMS has complete protection functions, over-current, over-voltage, and over-temperature detection, and the battery status information can be viewed on the system display screen in time.

System parameters

Model	192V50Ah	192V100Ah	192V200Ah
Rated voltage (V)	204.8	204.8	204.8
Rated Capacity (Ah)	50	100	200
Rated energy (kwh)	10.24	20.48	40.96
Operating voltage range (V)	147.2 ~ 233.6 (Cell: 2.3V-3.65V)		
Charge voltage (V)	217.6 ~ 220.8 (Cell: 3.40V-3.45V)		
Floating voltage (V)	213 ~ 216 (Cell: 3.33V-3.38V)		
charging current (A)	0-50	0-100	0-200
Peak charging current (A)	75; 5s	150; 5s	250; 5s
Discharging current (A)	50	100	200
Peak discharging current (A)	75; 30s	150; 30s	300; 30s
Communication	CAN/RS485,		
Dry node output	2 (NO/NC Optional)		
Charge and discharge capacity efficiency	≥96%		
Cooling	Natural cooling		
Cycle life	≥2000 Time		
IP	IP40		
Size (mm)	15U	19U	27U
Total mass (kg)	about 110	about 210	about 380
Operating temperature	Charging temperature: 0°C~60°C Discharging temperature: -20°C~60°C		

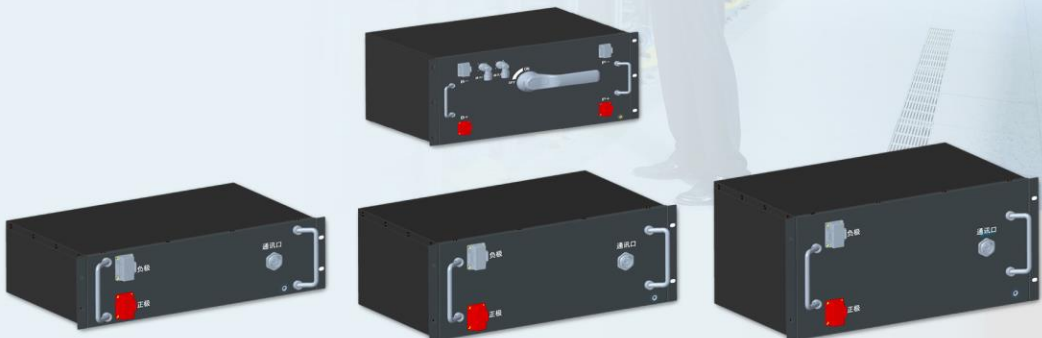
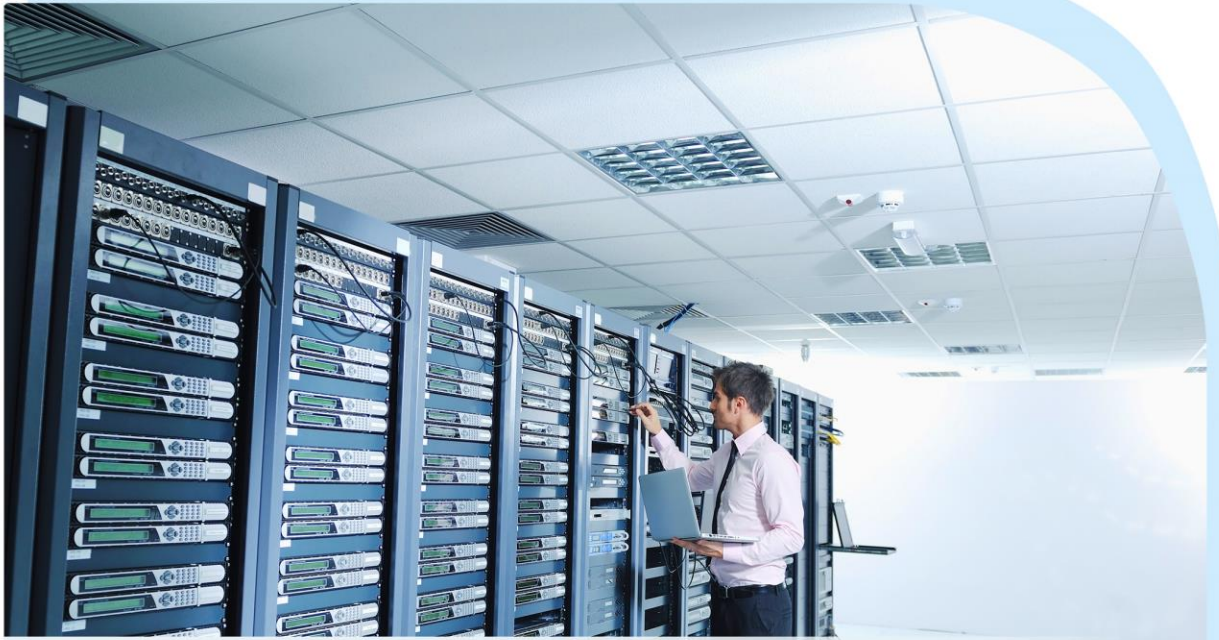
UPS POWER

240V/Series



UPS POWER

360V/Series



Lithium battery characteristics

Modular design, standardized production, simple and efficient; triple protection design, safe and reliable.

The BMS has complete protection functions, over-current, over-voltage, and over-temperature detection, and the battery status information can be viewed on the system display screen in time.

System parameters

Model	360V50Ah	360V100Ah	360V200Ah
Rated voltage (V)	384	384	384
Rated Capacity (Ah)	50	100	200
Rated energy (kwh)	19.2	38.4	76.8
Operating voltage range (V)	276 ~ 438 (Cell: 2.3V-3.65V)		
Charge voltage (V)	408 ~ 414 (Cell: 3.40V-3.45V)		
Floating voltage (V)	399.6 ~ 405.6 (Cell: 3.33V-3.38V)		
charging current (A)	0-50	0-100	0-200
Peak charging current (A)	75; 5s	150; 5s	250; 5s
Discharging current (A)	50	100	200
Peak discharging current (A)	75; 30s	150; 30s	300; 30s
Communication	CAN/RS485,		
Dry node output	2 (NO/NC Optional)		
Charge and discharge capacity efficiency	≥96%		
Cooling	Natural cooling		
Cycle life	≥2000 Time		
IP	IP40		
Size (mm)	27U	35U	24U+27U
Total mass (kg)	about 180	about 370	about 660
Operating temperature	Charging temperature: 0°C~60°C		
	Discharging temperature: -20°C~60°C		

Lithium battery characteristics

Modular design, standardized production, simple and efficient; triple protection design, safe and reliable.

The BMS has complete protection functions, over-current, over-voltage, and over-temperature detection, and the battery status information can be viewed on the system display screen in time.

System parameters			
Model	240V50Ah	240V100Ah	240V200Ah
Rated voltage (V)	256	256	256
Rated Capacity (Ah)	50	100	200
Rated energy (kwh)	12.8	25.6	51.2
Operating voltage range (V)	184 ~ 292 (Cell: 2.3V-3.65V)		
Charge voltage (V)	272 ~ 276 (Cell: 3.40V-3.45V)		
Floating voltage (V)	266.4-270.4 (Cell: 3.33V-3.38V)		
charging current (A)	0-50	0-100	0-200
Peak charging current (A)	75; 5s	150; 5s	250; 5s
Discharging current (A)	50	100	200
Peak discharging current (A)	75; 30s	150; 30s	300; 30s
Communication	CAN/RS485,		
Dry node output	2 (NO/NC Optional)		
Charge and discharge capacity efficiency	≥96%		
Cooling	Natural cooling		
Cycle life	≥2000 Time		
IP	IP40		
Size (mm)	21U	27U	39U
Total mass (kg)	about 150	about 300	about 540
Operating temperature	Charging temperature: 0°C~60°C		
	Discharging temperature: -20°C~60°C		